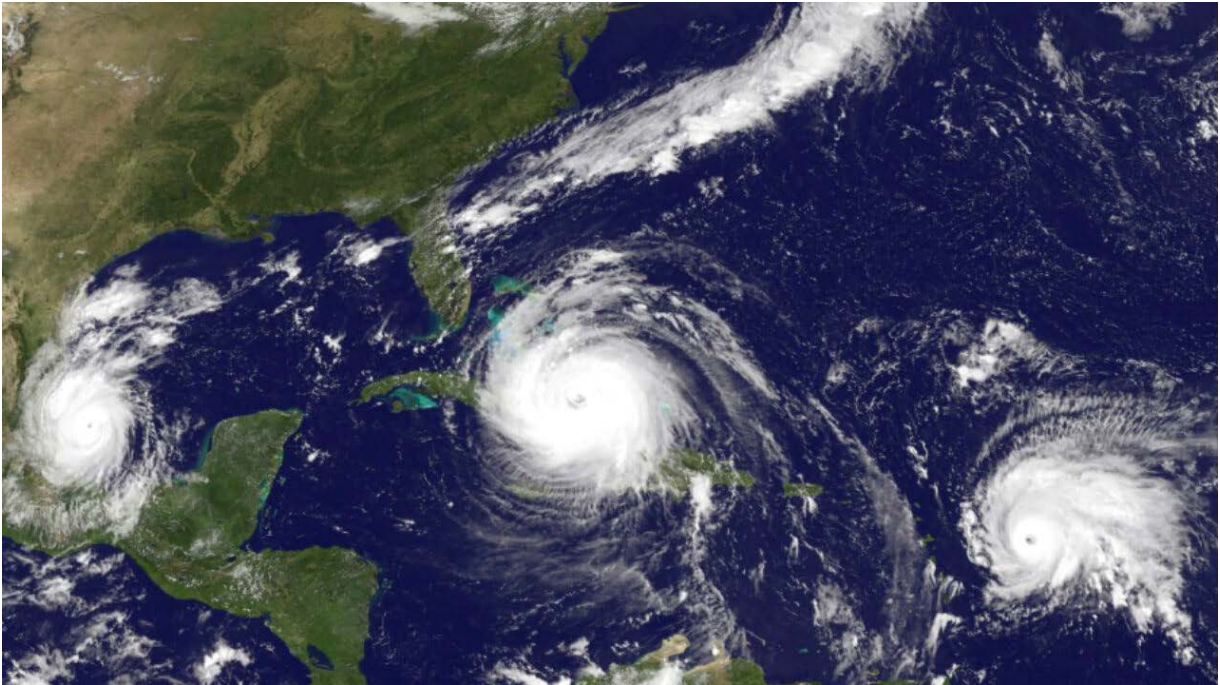




## ILA-USMX JOINT SAFETY COMMITTEE

OSH Circular 2022-06 (03 June 2022)

### HURRICANE SEASON BEGINS!



Credit: NASA - Use is exclusively for non-profit educational purposes

**The U.S. 2022 hurricane season runs from 01 June to 30 November.** The principal areas covered include the Atlantic Ocean, the Gulf of Mexico and the Caribbean Sea. The U.S. National Weather Service defines a hurricane as a “*tropical cyclone with maximum sustained winds of 75 miles per hour (64 knots per hour) or more.*”

Each year U.S. ports within those geographical ranges are adversely affected by hurricane force winds and associated surges. Advance preparation for these weather events is mandatory and should be undertaken by all port interests.

The U.S. Coast Guard publishes (and updates from time to time) heavy weather contingency plans that should be monitored and followed. Each U.S. port sector’s plan may be accessed by following this link: <https://homeport.uscg.mil/port-directory/boston>, and then clicking on the icon on the top left side of the page entitled “Port Directory.” Then, find your port and explore that port’s “Homeport” page.

If you encounter any difficulty in accessing the plan for your individual port, feel free to write to us at the e-mail address below. We’ll send you the most current plan in our files.

**Got an OSH-related question? Write to the JSC at: [blueoceana@optonline.net](mailto:blueoceana@optonline.net)**

### Working Together For The Benefit Of All

ILA-USMX OSH Circulars are devised to reflect the best possible information and guidance, and are products of diligent research and the most up to date subject matter knowledge. Consequently, while the information contained herein is believed to be accurate, owing to a host of factors ILA-USMX can convey no direct or implied warranty relative to the reliance of parties upon content.