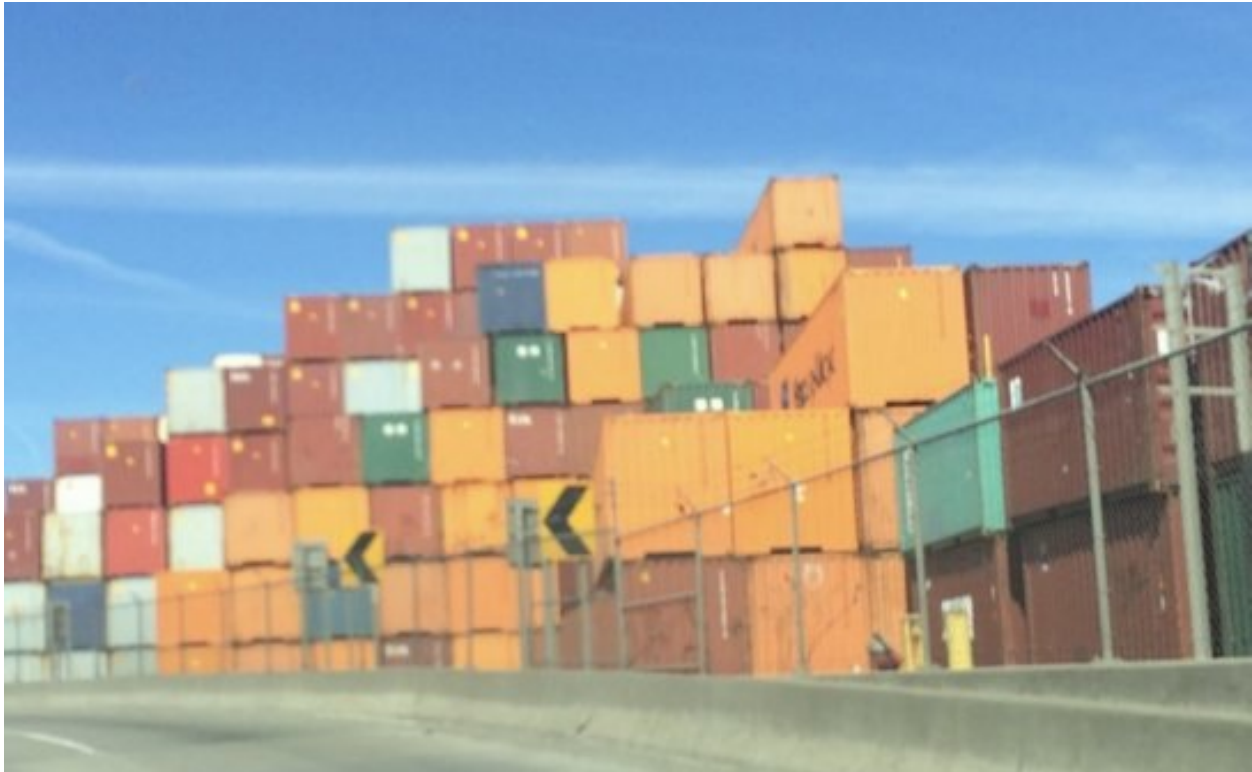


NJ Union County Elizabeth

OSHA Confirms Death Investigation at Port Elizabeth

Submitted by RLS Staff on Feb 14 2020 - 4:01pm.



OSHA and The U.S Department of Labor has confirmed a death investigation that's underway at Port Elizabeth at this time.

Officials would not immediately release much details regarding the incident, but according to preliminary reports, workers at the APM Terminal in Elizabeth were sent home and all trucks on line or inside the terminal were turned around for the investigation that happened at approximately 9 am.

Emergency responders were notified of a severely injured person on the premises.