

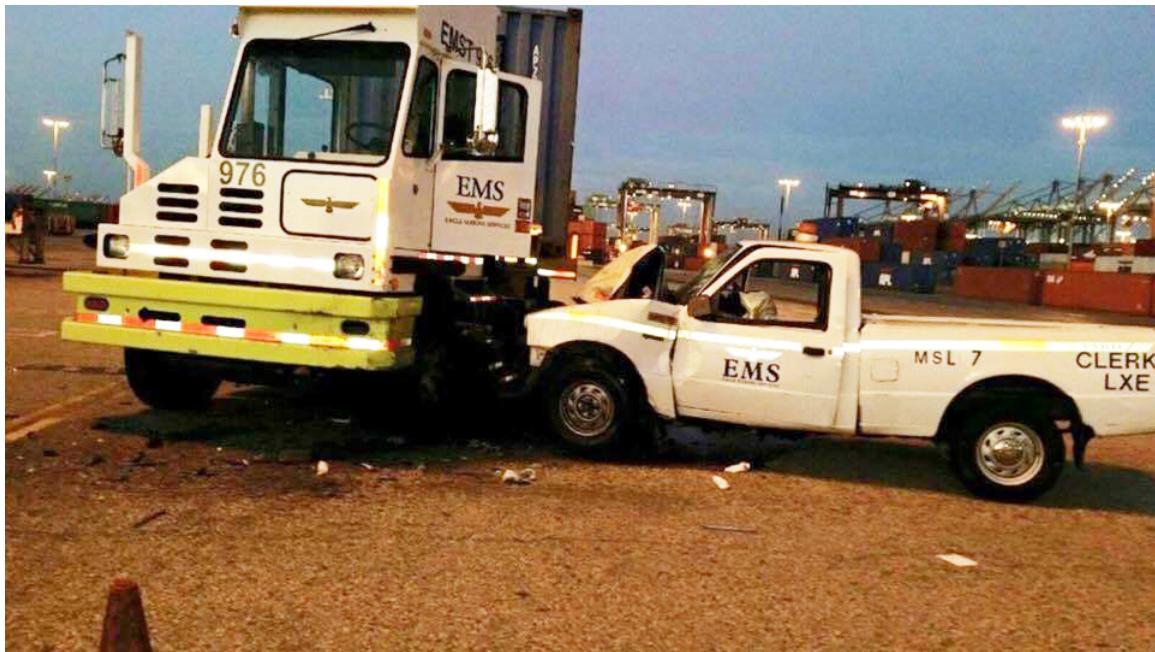


BLUEOCEANA NEWS SERVICE

11 August 2015 ~ Los Angeles, California

The Blueocean Company has learned that a longshore checker has died in a work-related accident today at the Eagle Marine Services (APL) facility in Los Angeles.

Reports coming to us indicate that the checker (name unknown at present) was driving a terminal pickup truck when he struck a terminal yard tractor (see photograph below).



Our sources, which include Los Angeles-based management and labor industry personnel (and others), advise that the injured worker was ambulated to a local hospital, where he died of injuries sustained.

While we have no further information at this time, we realistically conjecture that those injuries were the result of blunt forces received within the operator's compartment of the pickup.